



Grant's Braes School

137 Belford Street
Waverley
Dunedin 9013

Ph 03 454-4717
email: office@grantsbraes.school.nz
www.grantsbraes.school.nz

Newsletter No. 29

28 October 2021



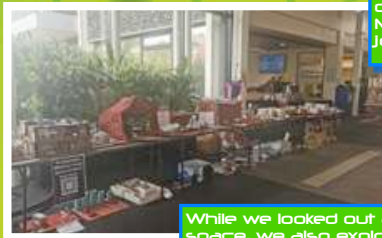
WELCOME TO
Norah and Amber
WHO JOINED
GRANTS BRAES
SCHOOL THIS WEEK



Mission to Mars

The Otago STEAM Cluster spent Term 3 on our "Mission to Mars" project based learning challenge!

Using the dimensions of Creativity, learners we explored Mars through the themes of Journeys and communities.



While we looked out at space, we also explored how this next step for humankind affects us in our own back yard.



MISSION TO MARS



The project culminated in a public exhibition of student work in Term 4 at the Otago Polytechnic (running now). We showed our learning through the Arts by making a movie, a model, a visual art piece, a drama, dance or piece of music. The choice was ours!



PRINCIPALS' MESSAGE

Kia tūtura, kia kite, kia mahi katahi - To explore, discover, and learn together

Mahia te mahi o tō ake kākau - Do things from the heart

E kumanu ana - We care

E ako ana - We learn

E āhei ana - We Can

E mahi kātahi ana - We are

Kia ora koutou Whānau,

Waking up to the news that there are two COVID-19 cases in Christchurch was quite unsettling. I do hope this is contained quickly and I will ensure any important information is sent out to whānau quickly and concisely.

Today our school participated in the NZ Shakeout to ensure our students and staff know what to do in the event of an earthquake occurring during school time. While it is fresh in the children's mind, it might pay to have a conversation with your whānau around emergency procedures at your home. The <https://getready.govt.nz/> website is a great resource to help get you and your family prepared.

I hope some of you have taken the opportunity to visit the Mission to Mars Exhibition at the Otago Polytechnic Student Hub. The exhibition has been so well received and it looks amazing. If you have a chance, pop down and take a look, but note that it closes at 5 pm today.

Whānau Hui

Tonight we are holding our Term 4 Whānau Hui. This is an important termly meeting where we meet with Māori whānau to get together and build connections as well as discussing ways of supporting our children's learning and wellbeing.

Drink Bottles - In Alert Level 2, our water fountains are required to be closed. We are keeping the bottle filling tap available for students to fill their water bottles. Please remember to send your children to school with a water bottle daily.

Ministry of Education Teacher Only Day - In 2019 our teachers accepted the pay offer from the Ministry of Education (MoE) which resulted in them settling the negotiations and accepting new terms for the 2019-2022 Primary Teachers' Collective Agreement. As part of the terms agreed to, the Ministry of Education has provided eight additional Teacher Only Days to help address teacher workload. These allocated eight MoE Teacher Only Days are required to be taken within the duration of the three-year collective agreement. At the December 2020 Board of Trustees Meeting, the use of one of these MoE Teachers Only Days was approved so that teachers could be released to write end-of-year student reports. As a result of this, our school will be closed Monday 29 November for this purpose. Thank you for your support and cooperation.

Hei kona mai i roto i kā mihi, Goodbye for now and thanks.

GARETH TAYLOR



DATES TO REMEMBER

Thurs 28 Oct : Whānau Hui, 5:30pm
 Thurs 4/Fri 5 Nov : Y5 Leadership Camp
 Tues 9-Fri 12 Nov : Y6 Camp
 Tues 9 : Y5 Visit to Albatross Colony
 Mon 15 Nov : BOT Meeting
 Thurs 25 Nov : Year 4 Sleepover in Hall
 Mon 29 Nov : Teacher Only Day
 Wed 1 Dec : Y6 Day Out
 Tuesday 7 or Wed 8 Dec : Uke Jam
 Tues 14 Dec : Leavers Ceremony
 Mon 13 Dec ; BOT meeting
 Tues 14 Dec : Last day of school year
 Wed 15 Dec : Teachers Only Day

SCHOLASTIC BOOK CLUB ISSUE 7

Brochures went home with the children last week. Final date for orders to be in is **9am tomorrow, Friday 29th October.**

SCHOOL POLICY INFORMATION School Docs Access

Visit the website - <http://grantsbraes.schooldocs.co.nz/1893.htm>
 Enter the username (grantsbraes) and p/wd (gbparents).
 This term's policies under review are Māori Educational Success.

**REMINDER - YOUR DONATIONS ARE ALL REQUIRED TO BE IN TOMORROW.
 PLEASE GET IN BEHIND OUR HARD WORKING PTA AND SUPPORT THEM WITH YOUR DONATION**

Week One, Term Four – an update from your PTA

We hope you had a great time in the school holidays with your children and have started term four feeling refreshed ☺



As I'm sure you've heard (and perhaps uttered an exclamation of relief), our school fair has been cancelled for 2021 due to Covid alert level restrictions. We usually raise around \$20,000 from our school fair so lack of fair = lack of funds for the upcoming build.

On a bright note, some of the businesses we had approached for prizes have generously sent these to us and are happy for us to use them for a raffle and we're calling it "The Great Grants Braes School PTA Raffle of 2021" There are already some great prizes up for grabs, and we are aiming to get the raffle cards distributed to our school community for selling beginning of November.



How can you help? We are looking for donations of goods and services that we can add into our raffle prizes to make them so desirable that they sell out quickly and easily. **This is an opportunity** to give a little extra towards our school.

Ideas of donations: supermarket and store vouchers, café and restaurant vouchers, \$\$, toys, puzzles, toiletries, games, wine, chocolates etc

Do you have **connections** in the business community who might like to help us out? We will promote them on our Facebook page and in newsletters.



There will be a box in the office entrance where you can bring **donations** and **vouchers** can be passed to the office staff for safe keeping.

There is a limited timeframe to get your donations and pledges to us. Everything needs to be locked in by **Friday 29th October**, allowing us to market the prizes that are available and distribute raffle cards to families.

Auction - We have also been generously gifted a Liverpool football jersey to auction off. We are working on the best way to do this –your ideas are welcome!



Please get in touch if you have questions, feedback, ideas or a passion for raffles!! From your friendly PTA

SUMMER SPORTS FEE REMINDER

Fees for futsal (\$42), tee-ball (\$44), rippa rugby (\$15) and touch rugby (\$22) were all due last Friday.

Thank you to those families who have already paid these.

If you are still to pay, your prompt attention would be much appreciated as we have to on-pay all the sporting organisations involved.

Payment can be made at the school office by cash or EFTPOS; by internet banking to our school account - 03 0905 0914747 00 or through KINDO.

Thanks.

PLAYER OF THE DAY

Futsal
 GB Flyers - Chloe (Ruru)

Grant's Braes Kindy Quiz Night at The Kensity - Thursday 4th November starting at 7pm

We hope you can help the kindy down the road with our major fundraiser for 2021.

We have the go ahead to run our Quiz Night next week and we're welcoming team registrations for a fun night with some excellent raffle prizes!

\$30 per team - teams of 4-6 people

Registration to be paid in advance, please contact Narelle on narellejakey@gmail.com to confirm your spot.

Thanks in advance for your support!



Queen's Aerobics

NOW ACCEPTING NEW ENROLLMENTS!

Our term 4 'have a go' lessons run from
14 November - 12 December 2021

- Accepting students aged year 4 +
- Lessons take place at QHS, Sunday's 2:30-3:30, \$80.00 term fee
- Gymnastics, dance, or previous sport aerobics experience is recommended
- Lessons are collaborative, inclusive and engaging! Learn basic sport aerobics movement, BIG focus on improving fitness, flexibility, strength and coordination

Don't miss out. Sign up today!

CONTACT US FOR MORE INFO

queensaerobics@gmail.com

THE DUNEDIN
Art Show

THE SHOW
MUST GO ON!
19th-21st November

Yes, we're open at Level 2 (and Level 1 too, of course). But due to social distancing requirements, our opening night is now **your choice of two sessions**: 7pm-8.30pm or 9pm-10.30 pm, Friday 19th november. Public show days start earlier too – **Saturday 9am-8pm** (late night) and **Sunday 9am-5pm**.

See our website for more information.

BUY TICKETS NOW!